



**V**  
**VISH**  
HOMES

New Home. New Life!



A large, stylized, light-colored opening quotation mark.

Our standard procedure differs from the usual practice. At Vish Horizon Homes, we prioritize your peace of mind by initiating the deed transfer process prior to construction. This ensures that your investment is safeguarded from the outset. With the deed secured, we proceed with construction on your own land, offering you zero risk for your investment.

A large, stylized, light-colored closing quotation mark.



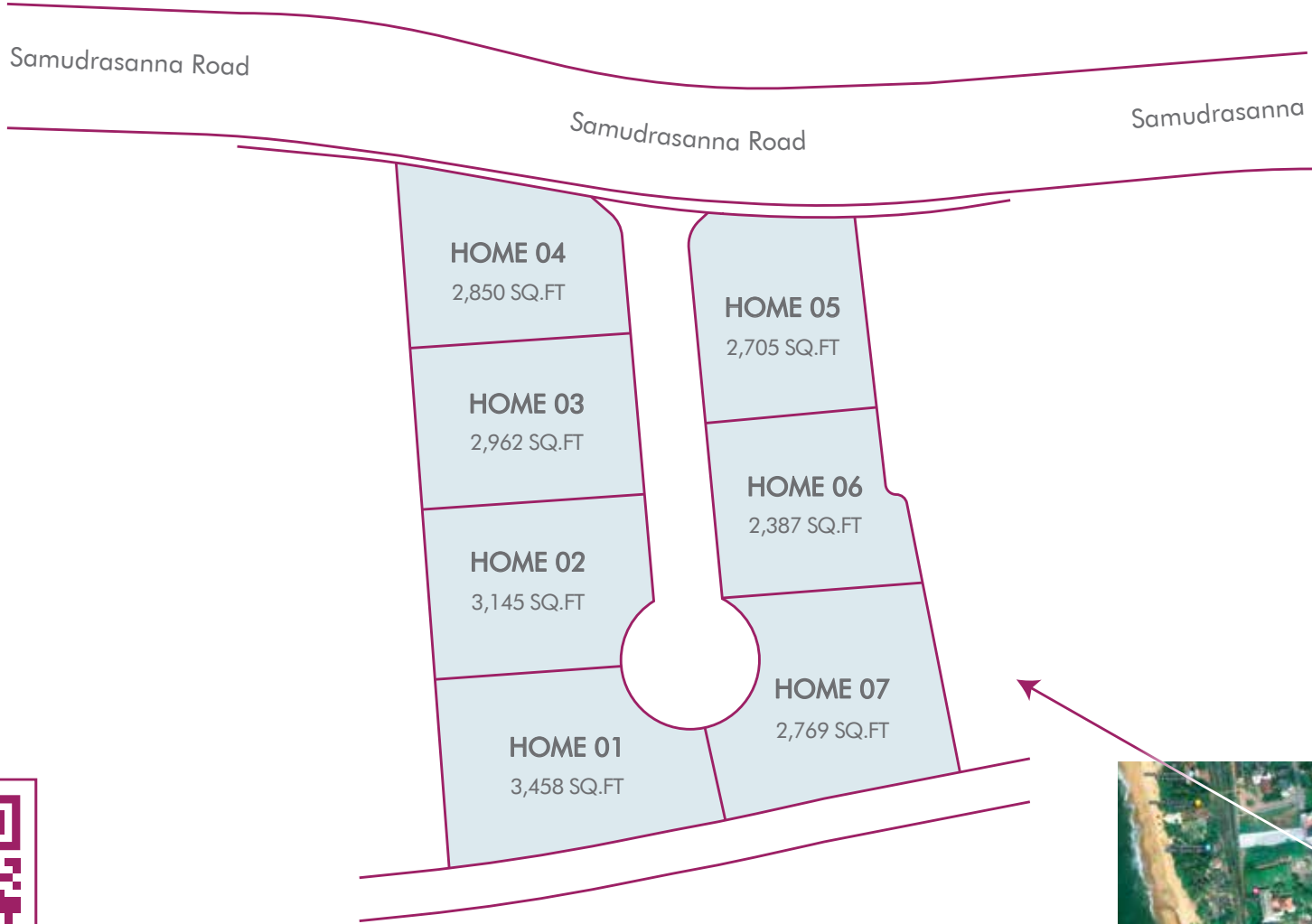
Vish Group stands as a beacon of excellence in the realm of consultation and construction in Sri Lanka. With a track record of numerous projects under our belt, we epitomize reliability and integrity in the industry. Our commitment to delivering on our promises ensures that each project is executed flawlessly, meeting and often exceeding the expectations of our clients. At Vish, our core value lies in providing our customers with not just homes, but with nests where they can truly flourish. We meticulously oversee every aspect of the process, from design to construction, ensuring that only the finest materials and engineering expertise are employed.



Welcome to Vish Horizon Homes, a harmonious blend of luxury living and serene surroundings. Nestled in the tranquil residential locale of Mount Lavinia, along Samudrasanna Road. This prestigious gated community spans across a 55-perch expanse, meticulously divided into seven plots, each promising a haven of peace and comfort. Situated amidst serene surroundings, Vish Horizon Homes offers a unique blend of luxury and convenience, making it the ideal destination for discerning homeowners.

Strategically located in the heart of Mount Lavinia, Samudrasanna Road, Vish Horizon Homes enjoys the advantage of a prime location. Residents can bask in the tranquility of suburban living while still being in close proximity to urban amenities. The community features two spacious car parks for each house, ensuring ample parking space for residents and guests alike. Moreover, each home is thoughtfully designed with five bedrooms, four bathrooms, a maid room, and provisions for essential amenities such as air conditioning, CCTV, and solar panels. Additionally, residents will appreciate the luxury of individual water tanks, ensuring a constant and reliable water supply.

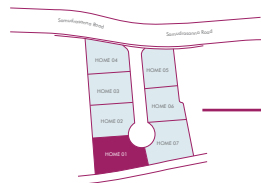
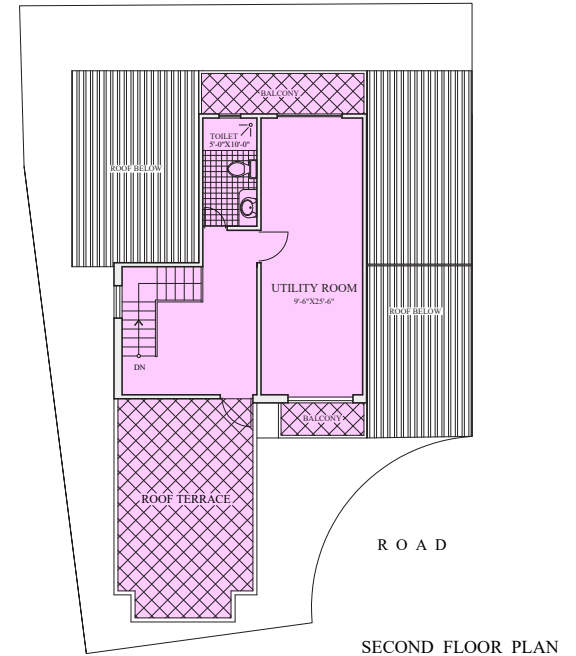
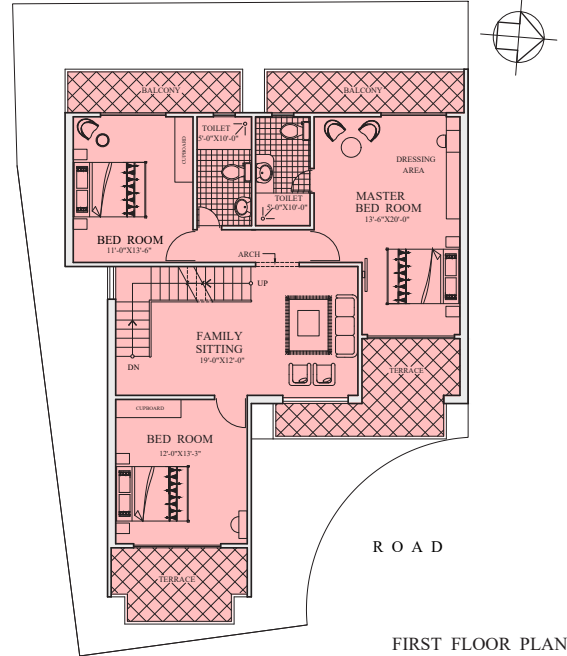
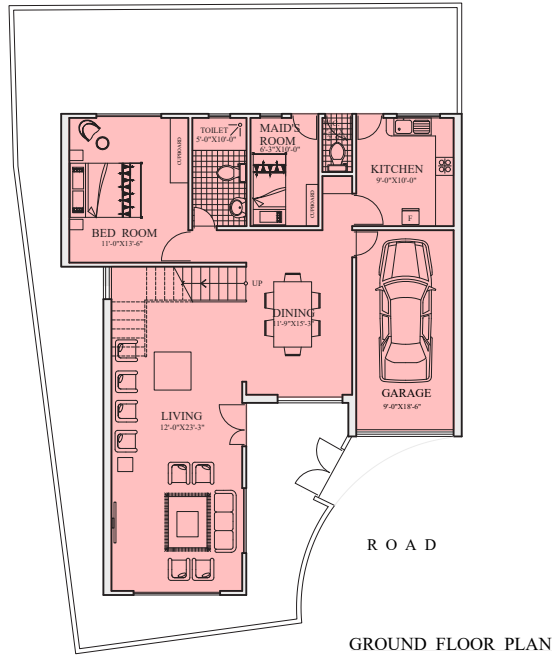
Vish Horizon Homes is conveniently located near a plethora of amenities, making everyday living a breeze. Residents will find themselves within easy reach of schools, hospitals, supermarkets, and recreational facilities. Whether it's enjoying a leisurely stroll along the nearby beach or indulging in a shopping spree at the nearby malls, Vish Horizon Homes offers the perfect blend of urban convenience and suburban tranquility. Embrace the vibrant lifestyle that Vish Horizon Homes has to offer, where luxury meets serenity in perfect harmony.



# 31/14F Samudrasanna Road, Mount Lavania

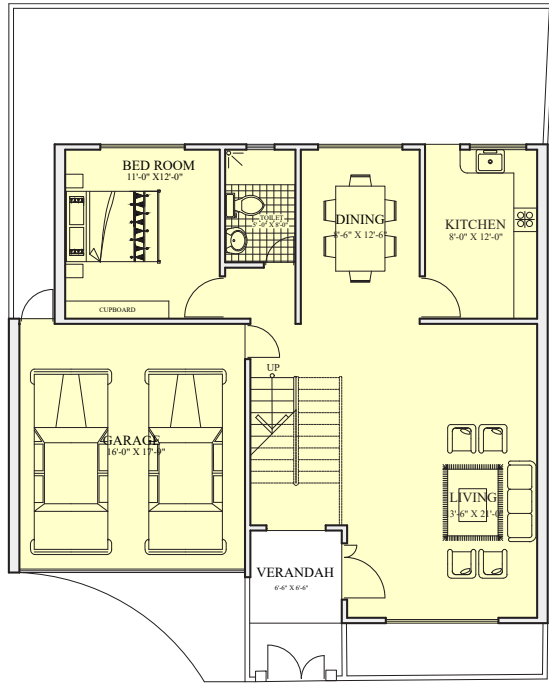


# HORIZON HOME 01

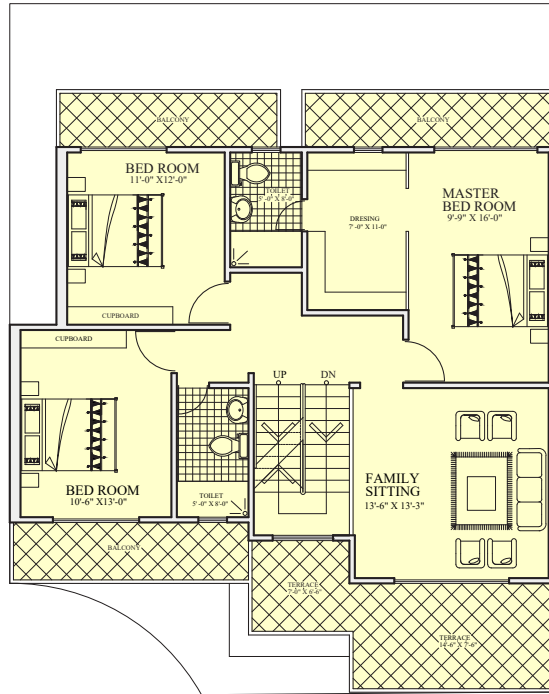


**3,458 SQ.FT**

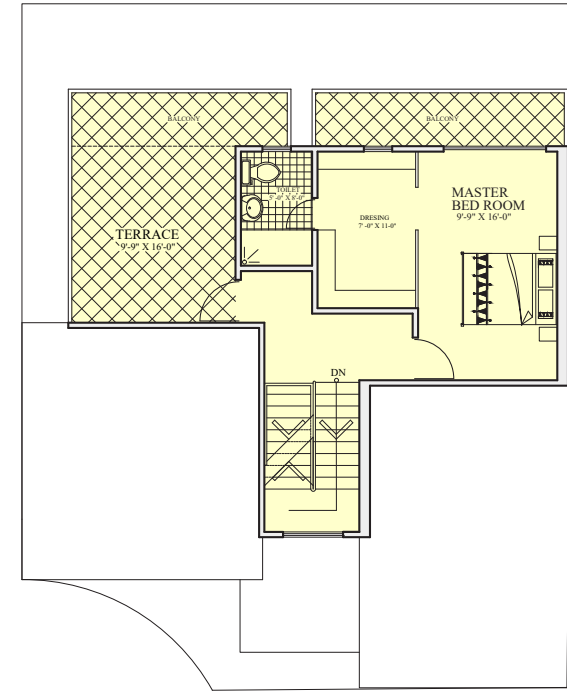
# HORIZON HOME 02



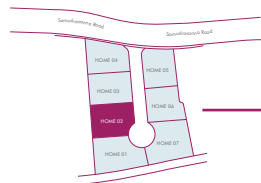
R O A D  
GROUND FLOOR



R O A D  
FIRST FLOOR

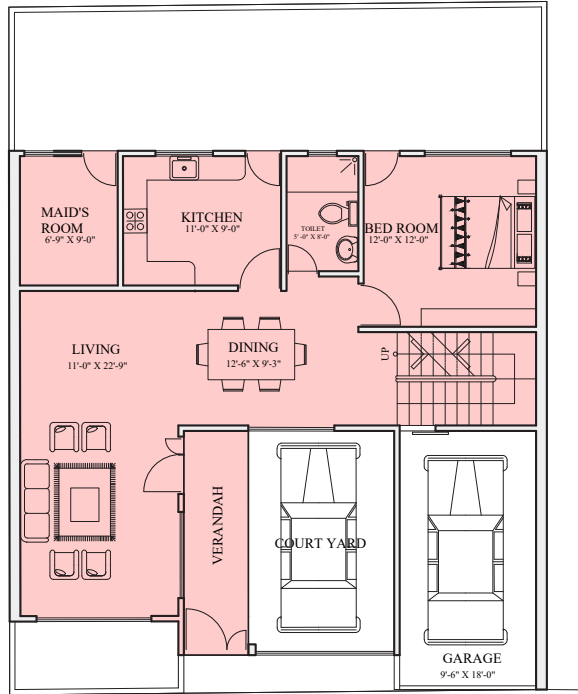


R O A D  
SECOND FLOOR



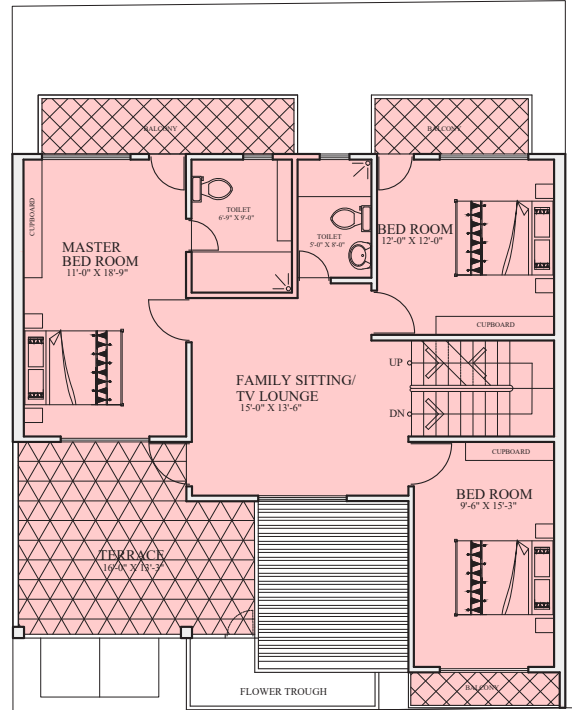
**3,145 SQ.FT**

# HORIZON HOME 03



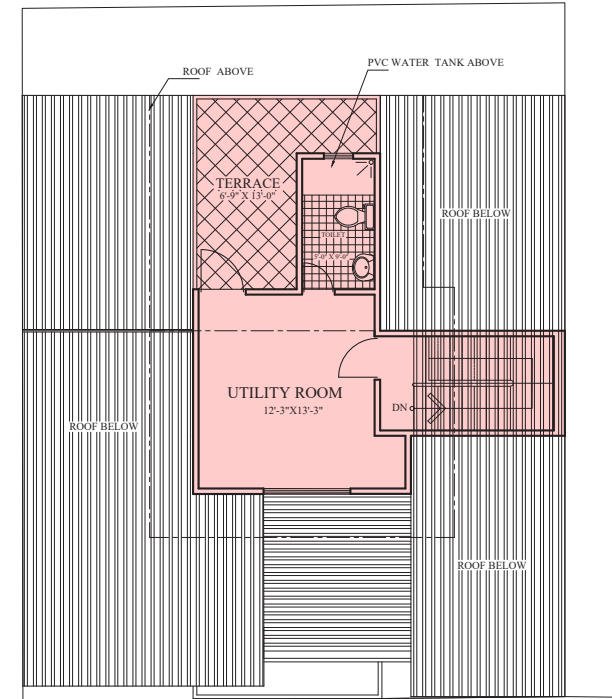
R O A D

GROUND FLOOR



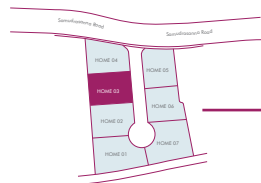
R O A D

FIRST FLOOR



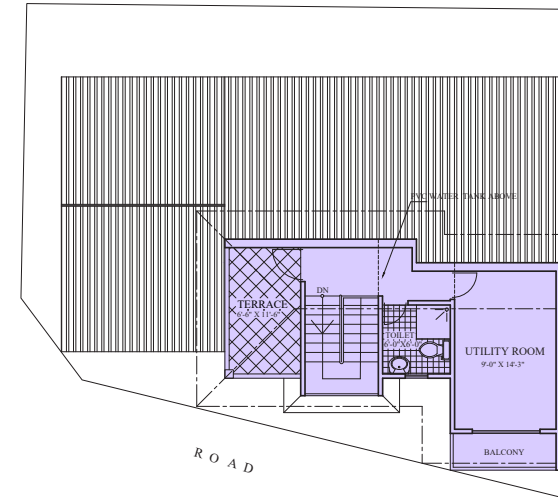
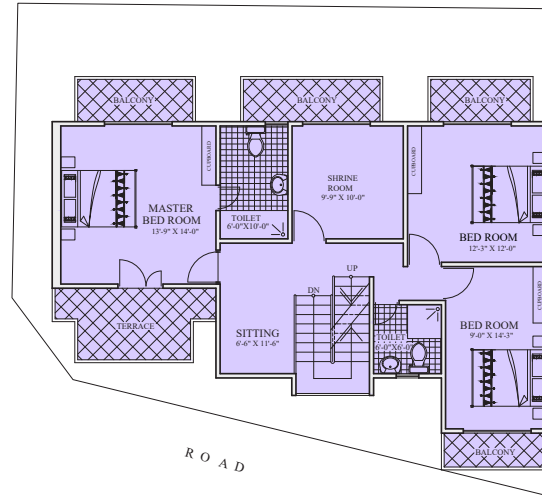
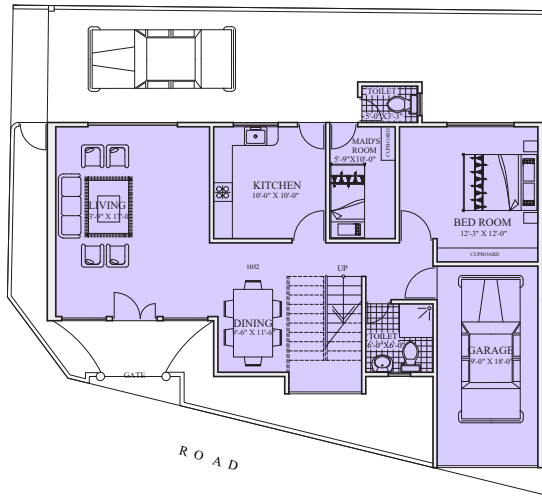
R O A D

SECOND FLOOR



**2,962 SQ.FT**

# HORIZON HOME 04

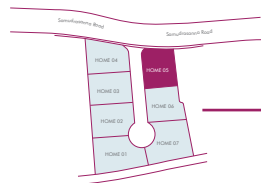
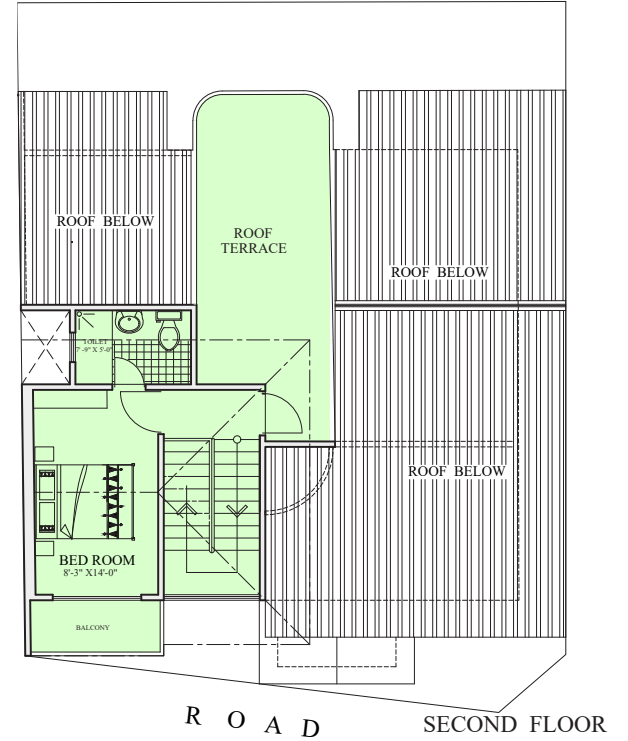
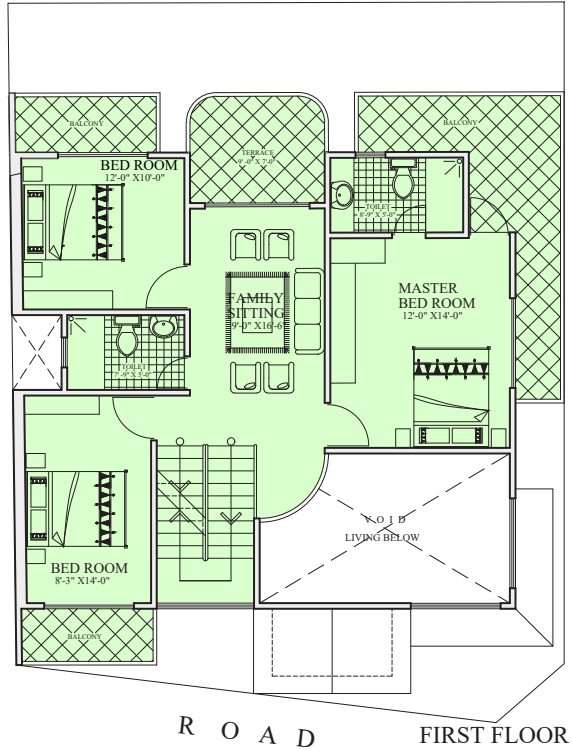
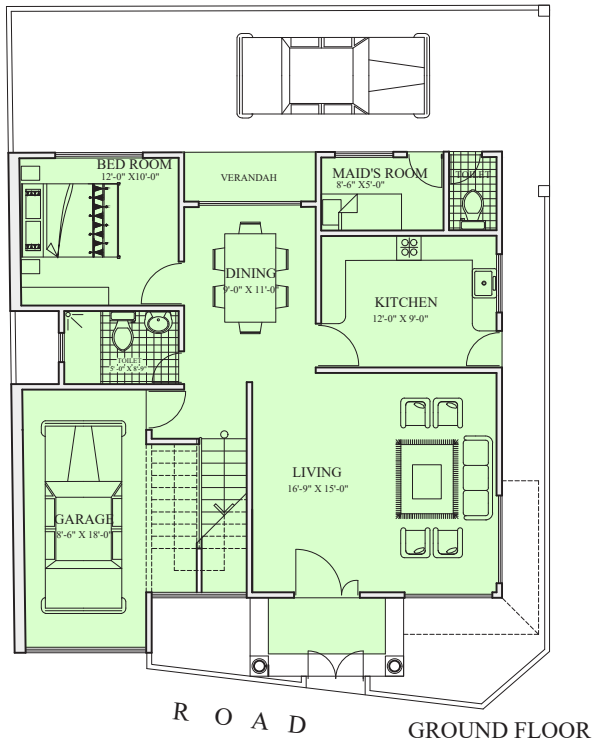


SECOND FLOOR



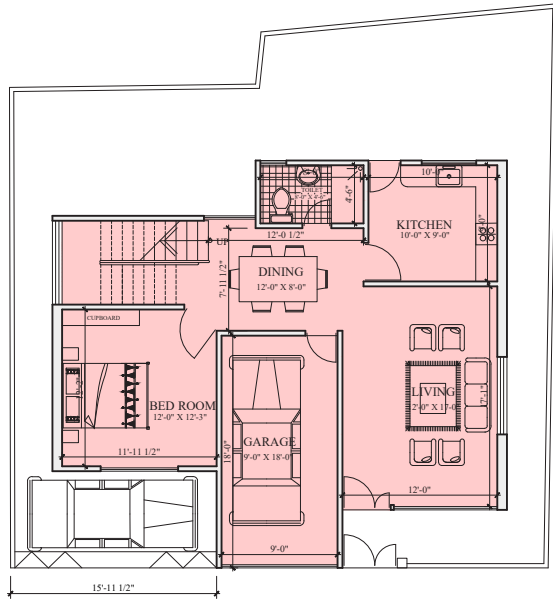
**2,850 SQ.FT**

# HORIZON HOME 05

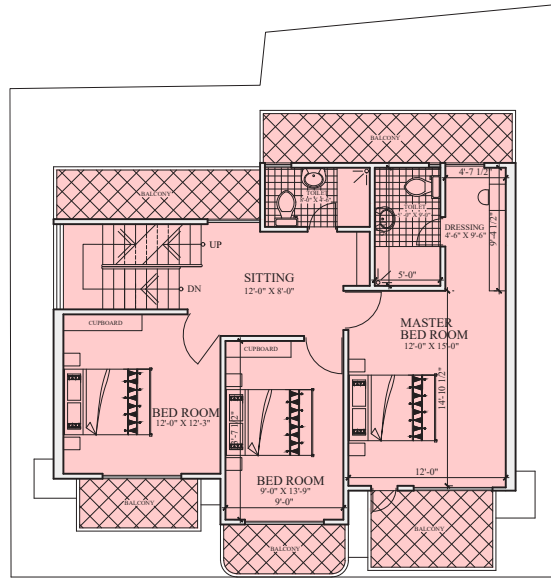


**2,705 SQ.FT**

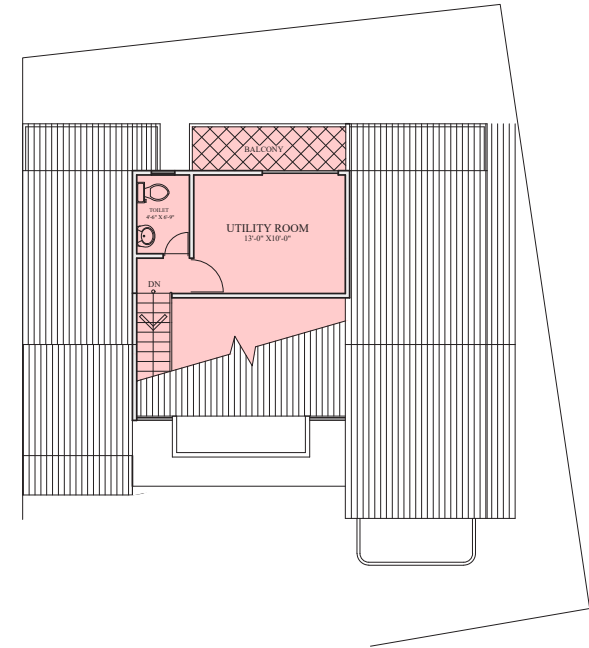
# HORIZON HOME 06



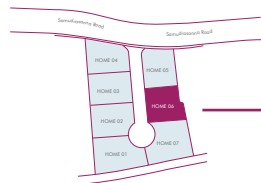
R O A D GROUND FLOOR



R O A D FIRST FLOOR

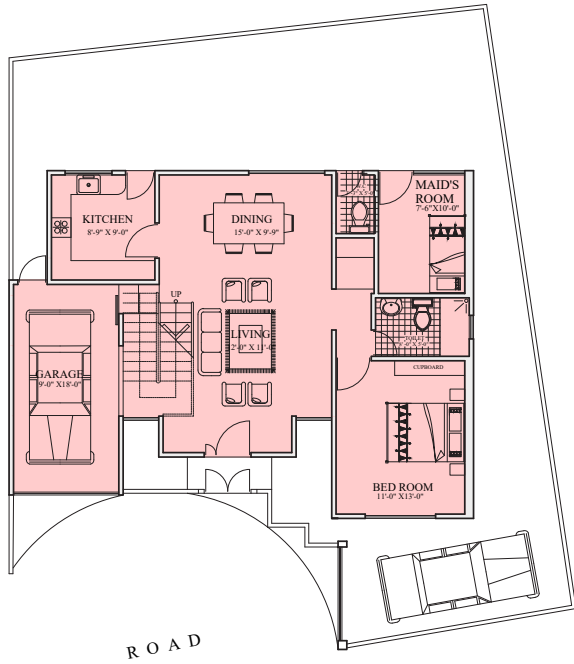


SECOND FLOOR

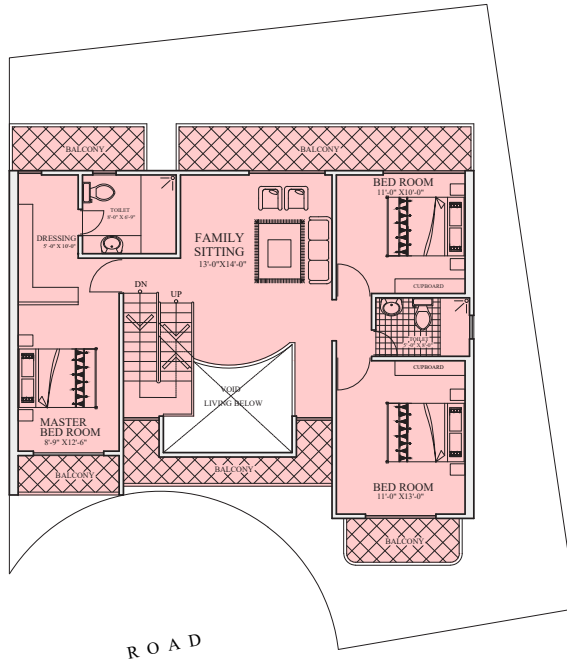


**2,387 SQ.FT**

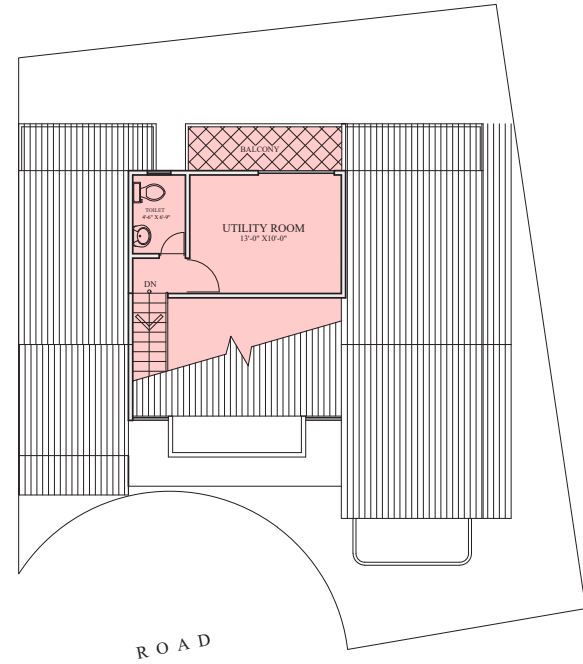
# HORIZON HOME 07



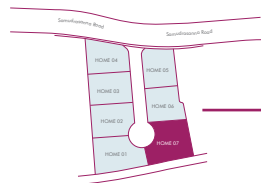
GROUND FLOOR



FIRST FLOOR



SECOND FLOOR



**2,769 SQ.FT**





Disclaimer:

All images, impressions, renderings, and specifications are for illustrative purposes only and do not form part of the sales offering. Final specifications are as per the construction agreement.



## VISH HOMES

#22/5, Station Road, Dehiwala, Sri Lanka.

+9477 738 9405

info@vish.lk | www.vish.lk